

warmcore®
WARM ALUMINIUM

Patio Door System



New Build Market

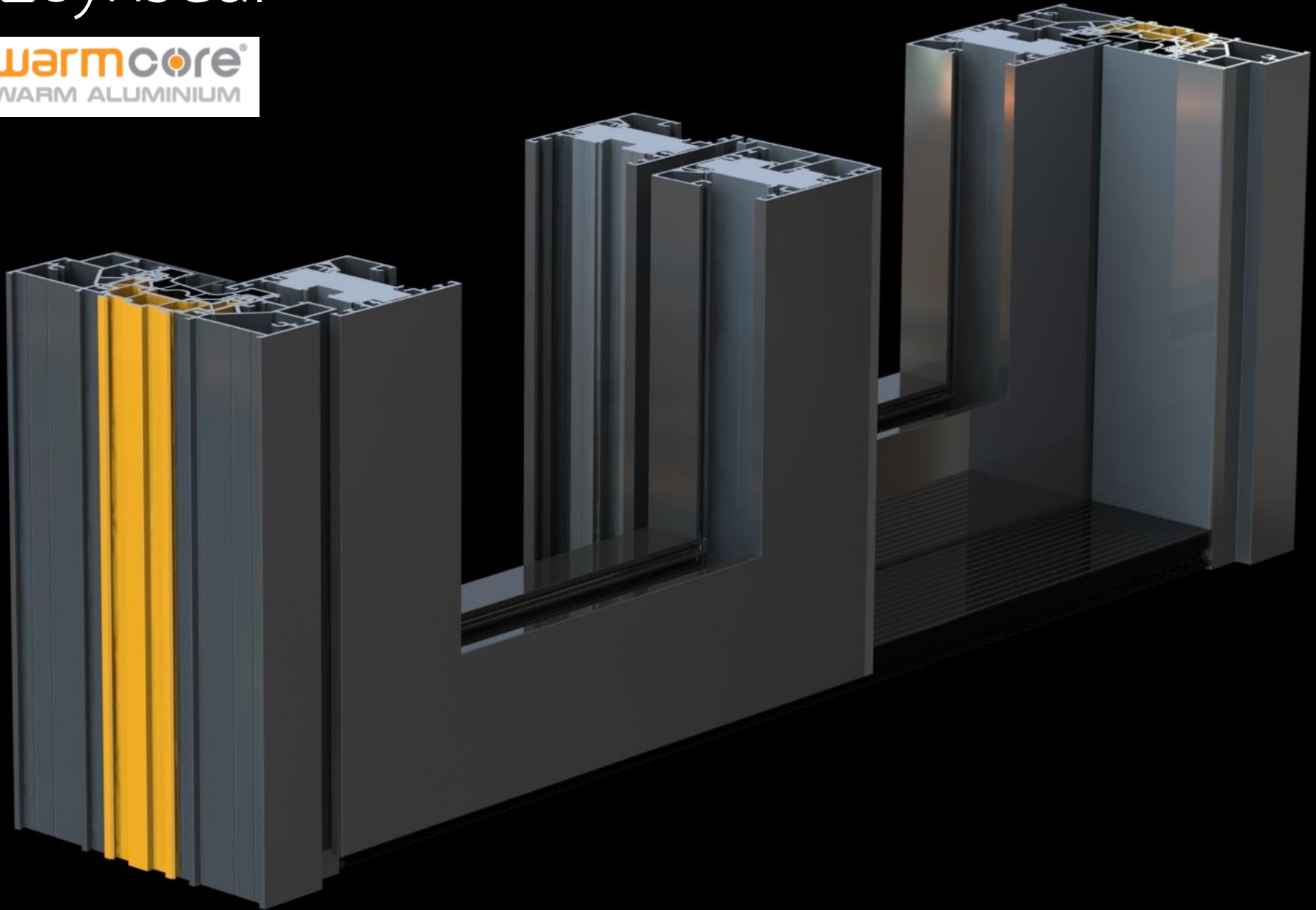
- Sliding Doors installations increased by 45% to 24,000 doorsets
- Aluminium Patio's and Bi-Folds in new build increased by 5% and 8% respectively in 2015.
- Aluminium is the only frame material with market growth predicted over next 5 years.

Home Improvement

- Sliding patio doors 57,000 units (all materials)
- Aluminium doors forecast to grow by 28%
- The trend is for first time installations, not replacement. This indicates a move towards larger doors, glazed extensions.

 synseal®

warmcore®
WARM ALUMINIUM



Specification

- In-line Sliding Patio
- Maximum width 6m
- Maximum Height 2.4m
- Maximum sash weight 220kg
- Twin track – Internal slider
- 2, 3 and 4 pane patio door
- Stainless steel interlock hook
- Designed to be PAS24 compliant
- Thermally broken interlock

- 156mm wide outer frame
- 70mm sashes
- Flush sashes
- Low threshold option

- Colours – White, 7016 Grey and Mill Finish

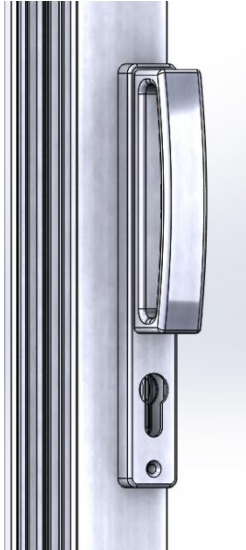
Rollers



- Stainless steel case
- Polymer wheel
- Precision bearings



Handles



Internal Handle

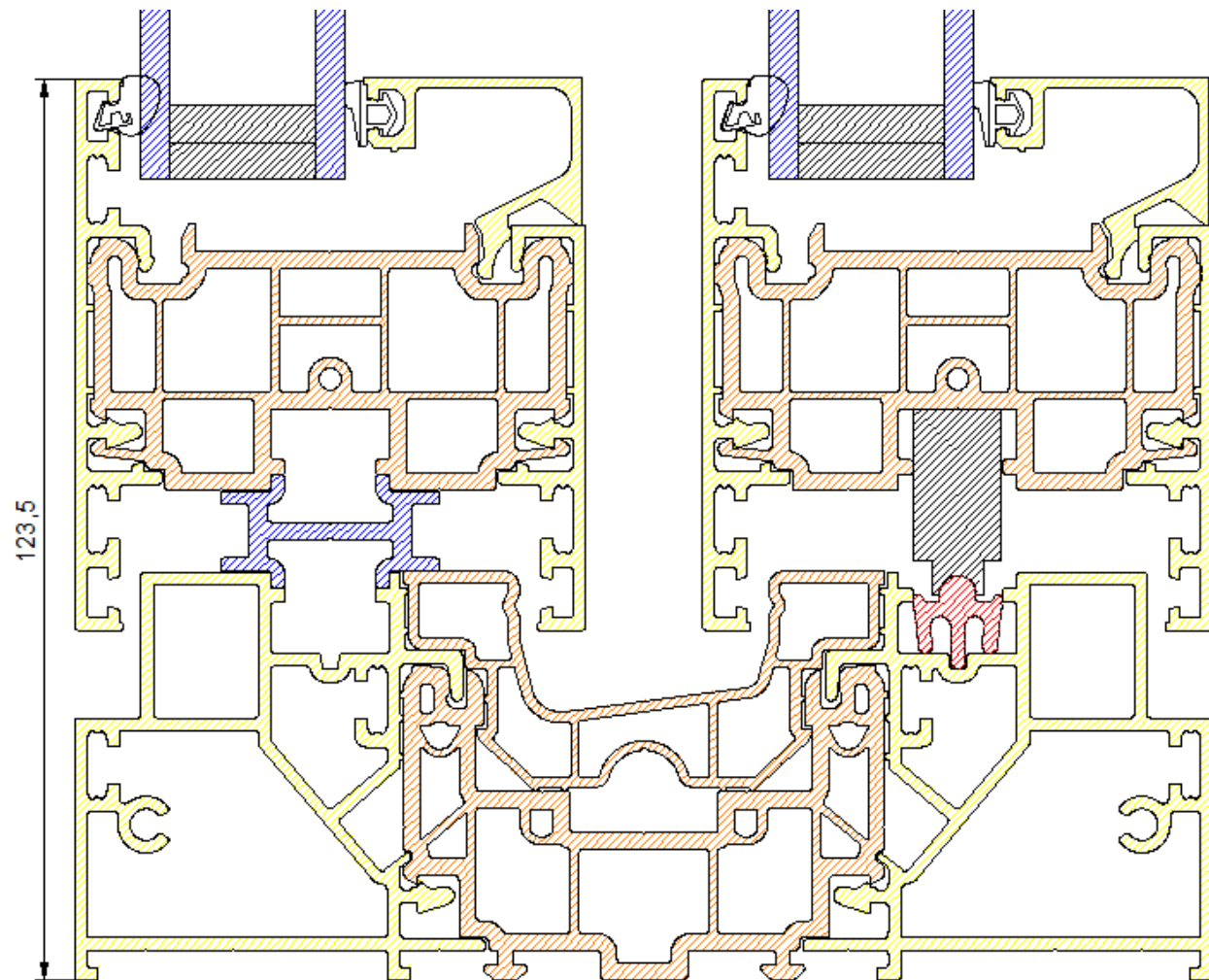
- In-line handle
- Up/Down to lock
- Stainless Steel or Powder Coated



External Handle

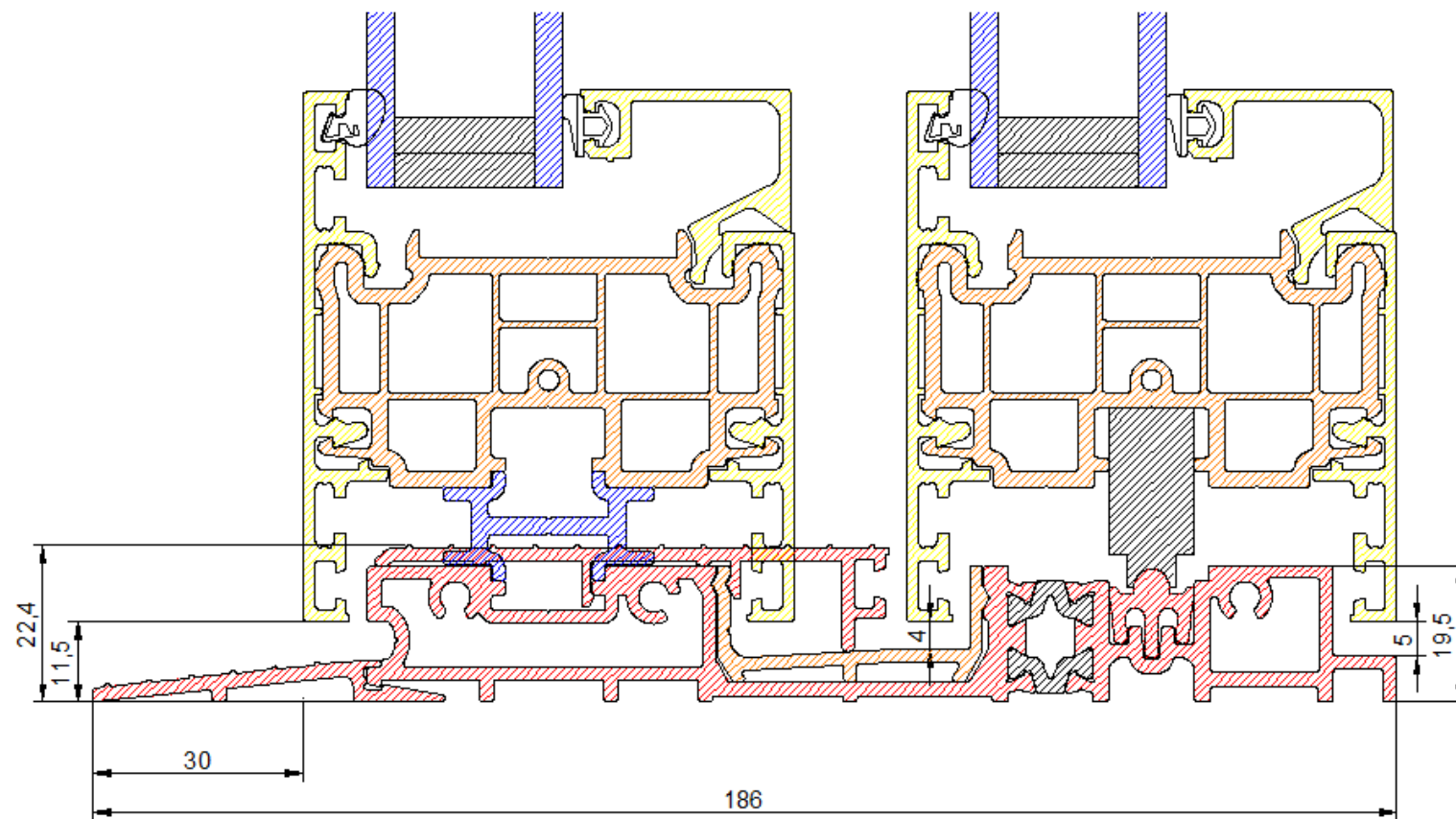
- Flush handle
- Up/Down to lock
- Stainless Steel or Powder Coated

Cross Sections - Standard Outer Frame without Sill



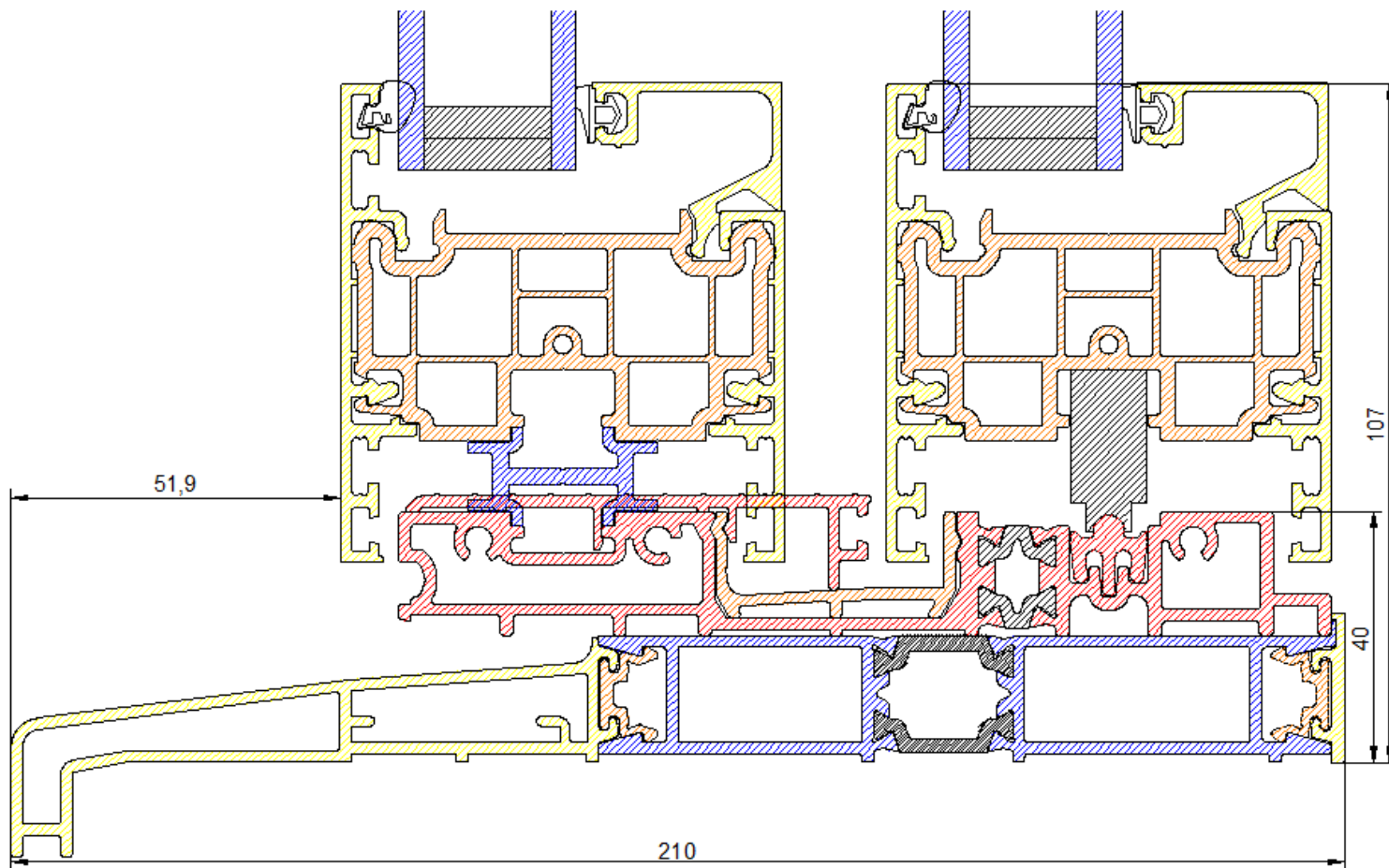
WarmCore – New Profiles

Cross Sections – Low Threshold without Sill



WarmCore – New Profiles

Cross Sections – Low Threshold with Sill



- May '16 – FIT Show
- June - Launch

warmcore[®]SV SLIM VENT WINDOW

Slim Sash Introduction WarmCore range extension

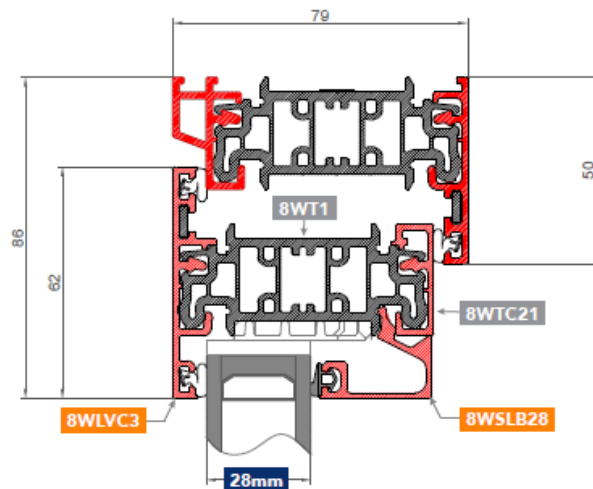
**18%
slimmer**
.....
than
standard

Listening to customer feedback, we have introduced a new slimmer vent, the **SV** Slim Vent Window. Available with beads for double and triple glazing, this vent option is available at the same price as the existing vent.

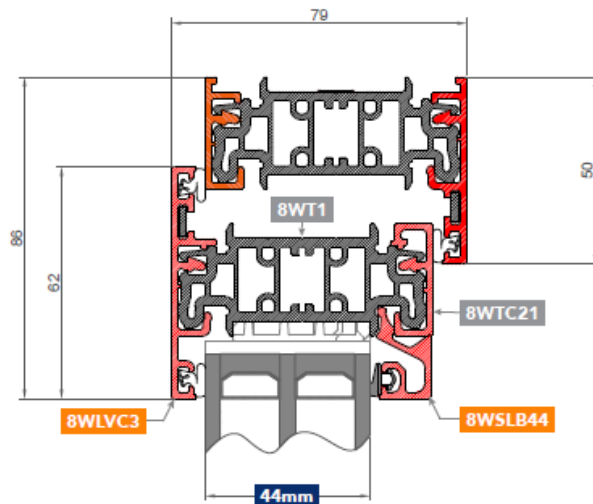
13.5mm slimmer sightlines means the SV window will be well received by commercial, as well as residential customers looking for maximum natural light solutions.

WarmCore SV - Slim vent Window

Head detail for Slim Vent in Flush 50mm Outerframe
with 28mm double glazing



Head detail for Slim Vent in 50mm Outerframe
with 44mm triple glazing



warmcore^{SV}
SLIM VENT WINDOW

Technical info

Aluminium profiles



8WLV3
SV
Vent Rebate
Square 62mm
Slim Sash



8WSLB28
SV
Bead 28mm
Square 17mm
for Slim Vent



8WSLB44
SV
Bead 44mm
Square 17mm
for Slim Vent

Please note: Until the introduction of the Multi-frame Slim Vent Keep in Summer 2017, the SV slim vent is only available in full and dummy casement window styles.

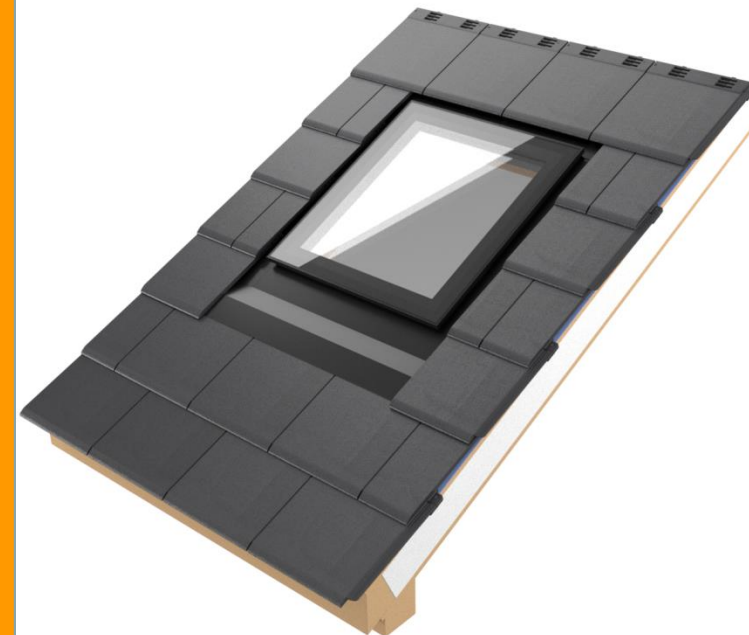
For manufacturing instructions
please refer to the latest WarmCore
window fabrication guide

The **SV** slim vent
is rolled on Row 4,
the transom lane



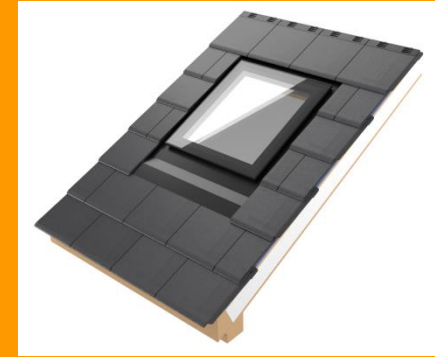
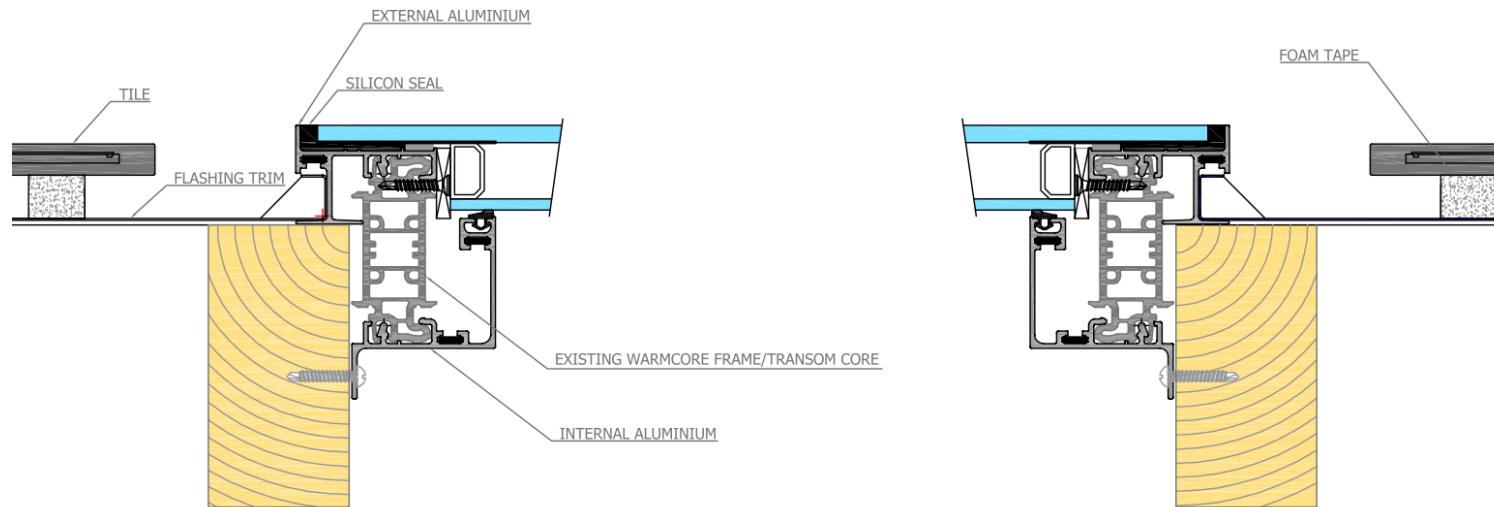
Fixed Roof Light

New Product
Introduction
February 2016



Roof Anatomy

Cross section through roof



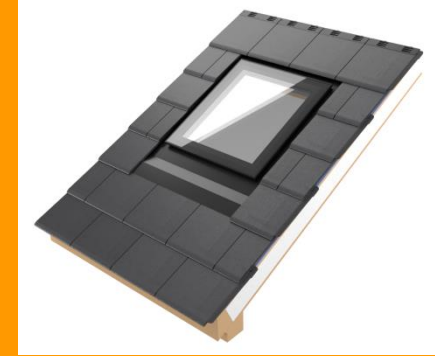
Aesthetics



Current VELUX Offering



NEW Fixed Light



Specification

	Velux	Celsius Fixed Roof Window
External Colour	Anthracite Grey	Black
Internal Colour	White	White
	Pine	RAL 7016 Grey
Sizes	550w x 780h	630w x 700h
	550w x 980h	630w x 1200h
	550w x 1180h	630w x 1700h
Visible Glass Size	370w x 583h	485w x 556h
	370w x 783h	485w 1056h
	370w x 983h	485w 1556h
Visible Glass Area	0.216m ²	0.270m ²
	0.290m ²	0.512m ²
	0.363m ²	0.754m ²

25% Glazed area increase
77% Glazed area increase
108% Glazed area increase

